

Section #7 Pictorial Table Of Contents

Introduction To
Accessories



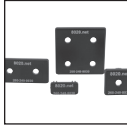
Page 434

How To
Order



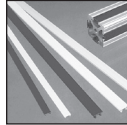
Page 435

End Caps



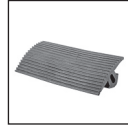
Page 436

T-Slot Covers



Page 437

T-Slot
Tread Strips



Page 438

Gravity Roller
Mounting Block



Page 438

Wiring Duct



Page 439

Cable
Ties



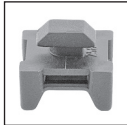
Page 439

Cable &
Tube Clips



Page 440

Cable
Mount Blocks



Page 441

Nylon T-Slot Nut



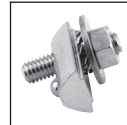
Page 441

Anodize
Breaker



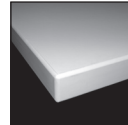
Page 442

Grounding
Terminal



Page 442

Laminated Table
Tops & Kits



Page 443

Cart Guard®



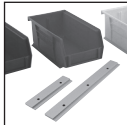
Page 444

Cart Guard®
Corners



Page 445

AkroBins®



Page 446

Tool Hangers



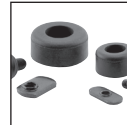
Page 447

Spring Snap
Hook



Page 447

Rubber
Bumpers



Page 448

Plastic Document
Holders



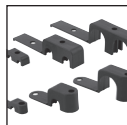
Page 449

Label
Holders



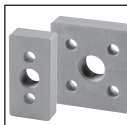
Page 449

Tube and Wire
Clamps



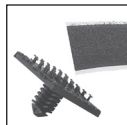
Page 450

Pressure
Manifold Plates



Pages 451-453

T-Slot Velcro®
Fastener



Page 454

Push-In
Fasteners



Page 454

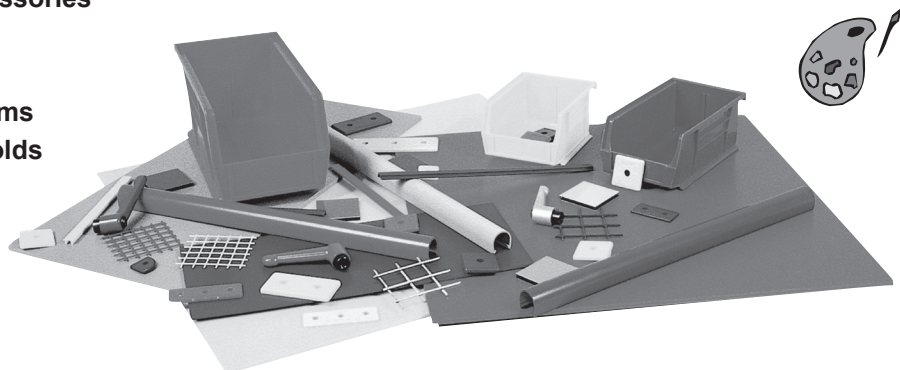
Power Strips



Page 455

- Add air and fluid options to your frame
- Ergonomic and adjustable
- Easy to add accessories
- Build your own:
 - Workstations
 - Inventory Systems
 - Pressure Manifolds
 - Work Benches
 - QC Stations
 - Shelving
 - Storage
 - and lots more!

Color Stuff!



Introduction to Accessories

Section 7 contains all the information needed for adding accessories to your application. The components in this section can be used to complete your project and enhance your design.

End caps and T-slot covers enclose the ends of your profile and cover the T-slots. They fit all of our T-slotted profiles and are available in different styles and many colors.

Table tops, which include a bumper edge, increase the flexibility of any workstation or desk.

Cart Guard® is a flexible PVC bumper, available in various colors, that will protect your application and anything that comes into contact with it.

AkroBins® and shelf bins, available in a variety of sizes and colors, are an economical way to store and display parts and components.

We have accessories of all kinds, including tool hangers and tube clamps. Use tool hangers to hang air tools, cable reels or transport cables. Single, double and stackable tube clamps attach your tubes and wires of all sizes.


Manifold plates are compatible with most fluids and gases. Select from our T-slotted profiles such as 1020, 1030, 2020, 2040, 1530, 1530-Lite, 1545, 3030, or 3060. If you need a custom manifold plate, check out our structural shapes, pages 203-220, and call 80/20 or your local distributor for a custom machining quote.

Considerations


- Custom designs to fit your space constraints
- Workstation and desk components to meet the demands and needs of the job at hand
- Aesthetically pleasing
- End or side mounts for manifold plates, even CUSTOM plates (our specialty)
- Accessories that complement your design
- **COLORS! COLORS! COLORS!**
- One-stop shopping!...only at 80/20®

Legend for Icons

 This part is 10 Series compatible

 This part can use double economy T-nuts (see bolt kit table P on page 268)

 Design files for this part can be found on the 80/20® DVD (Design Software)

 This part can use triple economy T-nuts (see bolt kit table Q on page 268)

 This part is available in several colors

How to Order 80/20® Accessories

Ordering accessories is a simple process; just list the part number, quantity, and a brief description of the accessory (see order example below). When you purchase accessories that require cut-to-length services, please include those charges with the complete order. Many parts have color choices; be sure to indicate the desired color when ordering. If ordering a manifold that mounts on the side, please send a drawing of the profile with your order. And remember to order an aluminum container hanger for each AkroBin® ordered.

How To Order

Shipping Method: Ship To: Customer:
 Ordered By: Address:
 City / State:
 Attention:
 Tag:

Complete Address & Shipping Method Required... NO P.O. Box

Part No.	Quantity	Length	Description / Machining	Price/ UOM	Ext. Price
1010	2	18.50"	7042 in A both ends	\$.23	\$ 8.51
1515-Lite-145	5	145.00"	Full length profile	\$65.25	\$326.25
3060	4	40.00"	7029 one end	\$2.95	\$472.00
3030	4	36.00"	7050 style G in W, X both ends	\$1.50	\$216.00
CM01-051006	2		Custom bracket per drawing #1	\$23.00	\$46.00
2611	1	5.25 sf.	1/4" bronze polycarb 1 @ 18" x 40" w/ 7311 per drawing	\$10.40	\$54.60
7150	1		Cut plastic panels all sides < -48"	\$10.50	\$10.50
7042	4		10 Series anchor fastener counterbore	\$2.25	\$9.00
7005	2		Cut-to-length for 1010	\$1.95	\$3.90
7023	4		Cut-to-length for 3060	\$2.90	\$11.60
7030	4		Cut-to-length for 3030	\$2.60	\$10.40
7050	64		15 Series drill access hole	\$1.95	\$124.80
7029	4		5/16-18 tap service for 3060	\$15.20	\$60.80
7311	2		Anchor fastener notch for 10 Series	\$0.53	\$1.06
3380	32		15 Series 5/16-18 black zinc end fastener w/ screw	\$1.60	\$51.20
2114	16		Gray T-Slot covers for 10 Series	\$3.45	\$55.20
2050	8		End caps for 3030	\$1.85	\$14.80
3395	4		10 Series anchor fasteners	\$2.90	\$11.60
3279	5		15 Series 5/16-18 black zinc double economy T-nut	\$0.79	\$3.95
4132	12		2 hole inside corner gusset bracket	\$3.95	\$47.40
3393	24		10 Series 1/4-20 BHSCS & economy T-nut	\$0.40	\$9.60
TOTAL					\$1549.17

Special Instructions: **Must be delivered for assembly by Friday!!!**

NOTE: Prices shown for illustration use only. Contact your distributor for a personalized quote.

1 - Profiles = Pages 147-202 • 2 - Custom Parts = Pages 203-220 • 3 - Panels = Pages 349-432

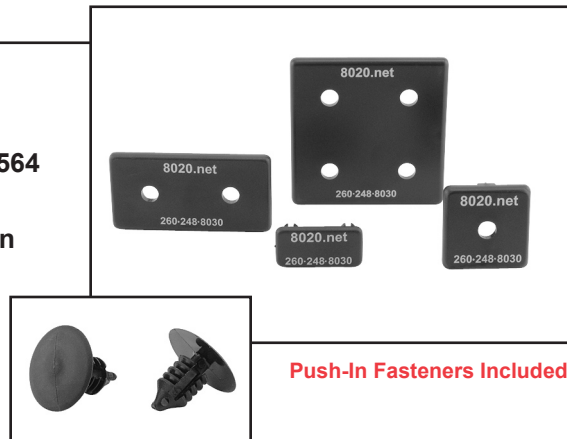
4 - Machining Services = Pages 559-608 • 5 - Accessories & Tools = Pages 433-456 & 549-558

Phone: 260-248-8030 • Fax: 260-248-8029 • www.8020.net

80/20® Inc.
The Industrial Erector Set®
THE STANDARD

End Caps  

- 10 and 15 Series compatible
- Can be mounted with 1/4-20 or 5/16-18 screws shown on pages 249-252. See page 564 for tapping service
- Made of molded black ABS with white screen printed logo or plain black
- For use with T-slotted profiles
- The finishing touch for your project
- Available in red, blue, yellow and gray



Push-In Fasteners Included

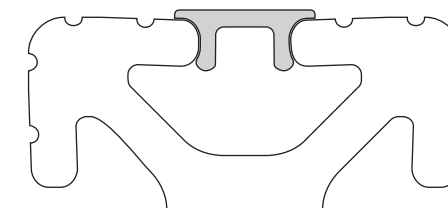
Part No.					Description	Size	Lbs.
Black	Red	Blue	Yellow	Gray			
2015	2015RED	2015BLU	2015YEL	2015GRA	1010 End Cap	1" x 1" x 1/8"	.005
2022	2022RED	2022BLU	2022YEL	2022GRA	1012 End Cap	1" x 1" x 1/8"	.003
2025	2025RED	2025BLU	2025YEL	2025GRA	1020 End Cap	1" x 2" x 1/8"	.010
2026	2026RED	2026BLU	2026YEL	2026GRA	1030 End Cap	1" x 3" x 1/8"	.015
2028	2028RED	2028BLU	2028YEL	2028GRA	2020 End Cap	2" x 2" x 1/8"	.020
2030	2030RED	2030BLU	2030YEL	2030GRA	1515/1515 Lite End Cap	1.5" x 1.5" x 3/16"	.015
2035	2035RED	2035BLU	2035YEL	2035GRA	1517 Quarter Round End Cap	1.5" x 1.5" x 3/16"	.013
2045	2045RED	2045BLU	2045YEL	2045GRA	1530/1530 Lite End Cap	1.5" x 3" x 3/16"	.030
2046	2046RED	2046BLU	2046YEL	2046GRA	1545 End Cap	1.5" x 4.5" x 3/16"	.045
2050	2050RED	2050BLU	2050YEL	2050GRA	3030 End Cap	3" x 3" x 3/16"	.065
2036	-	-	-	-	1534 Lite End Cap (Black Only)	1.5" x .75" x 1/8"	.007
2037	-	-	-	-	3034 Lite End Cap (Black Only)	3.0" x .75" x 1/8"	.017
2015-Plain	-	-	-	-	1010 Plain End Cap	1" x 1" x 1/8"	.005
2022-Plain	-	-	-	-	1012 Plain End Cap	1" x 1" x 1/8"	.003
2025-Plain	-	-	-	-	1020 Plain End Cap	1" x 2" x 1/8"	.010
2026-Plain	-	-	-	-	1030 Plain End Cap	1" x 3" x 1/8"	.015
2028-Plain	-	-	-	-	2020 Plain End Cap	2" x 2" x 1/8"	.020
2030-Plain	-	-	-	-	1515/1515 Lite Plain End Cap	1.5" x 1.5" x 3/16"	.015
2035-Plain	-	-	-	-	1517 Quarter Round Plain End Cap	1.5" x 1.5" x 3/16"	.013
2045-Plain	-	-	-	-	1530/1530 Lite Plain End Cap	1.5" x 3" x 3/16"	.030
2046-Plain	-	-	-	-	1545 Plain End Cap	1.5" x 4.5" x 3/16"	.045
2050-Plain	-	-	-	-	3030 Plain End Cap	3" x 3" x 3/16"	.065

 = 10 Series Compatible Part

Fractional

Standard T-Slot Covers  

- Makes a great dust cover for T-slots
- OSHA friendly
- Cover wires and tubes in T-slots
- Available in black, gray and high-visibility yellow
- Stock length = 72.5"
- **TIP:** Use soft face mallet found on page 558 to tap the cover into the T-slot

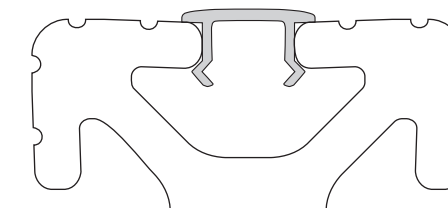


Part No.	Description	Lbs.
2112	Safety Yellow T-Slot Cover - 10 Series	.096
2113	Black T-Slot Cover - 10 Series	.096
2114	Gray T-Slot Cover - 10 Series	.096
2109	Safety Yellow T-Slot Cover - 15 Series	.121
2110	Black T-Slot Cover - 15 Series	.121
2111	Gray T-Slot Cover - 15 Series	.121

 = 10 Series Compatible Part

Economy T-Slot Covers  

- 10 and 15 Series compatible
- Cover wires and tubes in T-slots
- Cuts easily with metal shears
- Stock length = 72.5"
- Presses easily into T-slots
- Available in red, blue, black, gray, yellow and orange



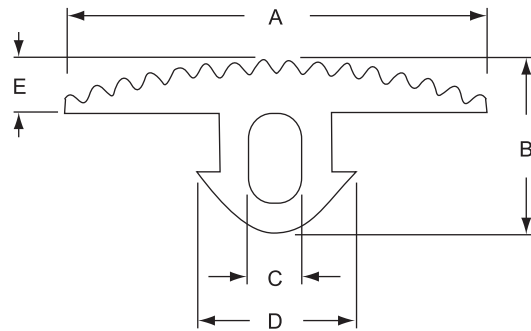
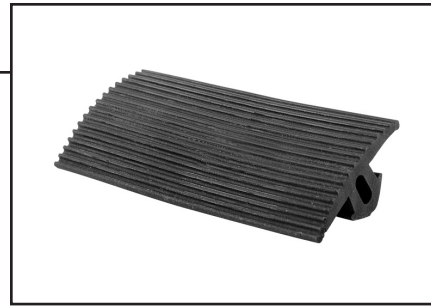
Part No.	Description	Lbs.
2819	Safety Yellow - 10 Series	.052
2820	Black - 10 Series	.052
2821	Gray - 10 Series	.052
2818	Red - 10 Series	.052
2817	Blue - 10 Series	.052
2816	Orange - 10 Series	.052
2822	Safety Yellow - 15 Series	.113
2823	Black - 15 Series	.113
2824	Gray - 15 Series	.113
2825	Red - 15 Series	.113
2826	Blue - 15 Series	.113
2827	Orange - 15 Series	.113

 = 10 Series Compatible Part

80/20® Inc.
The Industrial Erector Set®
THE STANDARD

T-Slot Tread Strip
NBR rubber, Black

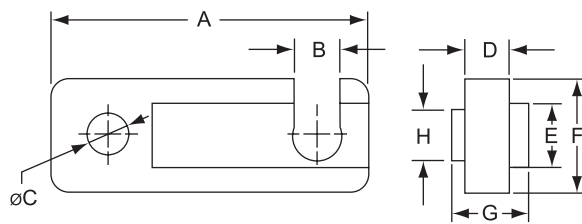
- Press-fits in 15 Series T-slot
- Anti-slip ribbed surface on top side
- Sold by the foot, maximum length 65'



Part No.	Slot Tab	A	B	C	D	E	Lbs. / Ft.	Length	Compatibility Code*
12006	.315	1.224	.516	.335	.472	.157	.46	Sold by the foot	8-15, 8-30, 8-40

Gravity Roller Mounting Block
Fiberglass Reinforced Nylon, Black

- Roller pin snaps in/out
- Reverses to fit slot 8/10 profiles
- Use with gravity rollers on page 1134



Recommended Mounting Hardware:

Part No.	Series	Qty	Description
75-3601	15	1	M6 x 14mm BHSCS & Drop-In T-nut

Part No.	A	B	C	D	E	F	G	H	Lbs.	Compatibility Code*
12167	1.969	.283	.256	.276	.394	.709	.472	.315	.018	8-15, 8-40, 10-45

* See Compatibility Code information on page 152.

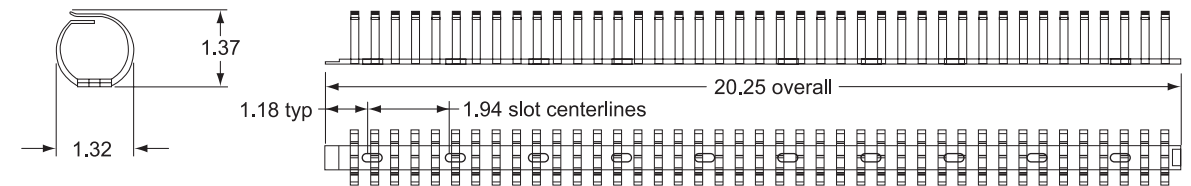
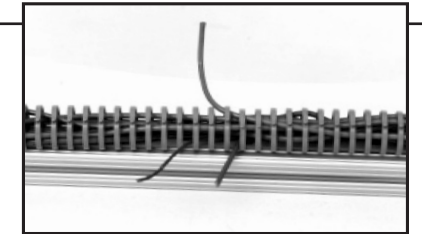
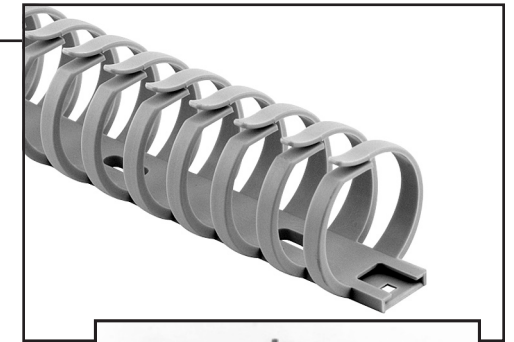


Fractional

Wiring Duct



- 10 and 15 Series compatible
- Strips interlock for end-to-end attachment
- Available in gray
- Interlocked length 19.82"
- Overlapping fingers mean no separate cover and no sharp edges
- 10 bolt holes per section, 3 bolt assemblies per length for typical applications



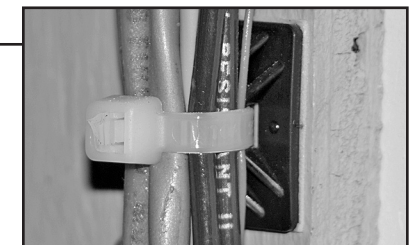
Part No.	Description	Lbs.
2899	Wire Duct	.052

Bolt Kits	Series
(3) 3426	10 Series
(3) 3487	15 Series

☒ = 10 Series Compatible Part

Cable Ties & Mounting

- Organizes tubing and wires
- Compatible with all profile series
- Sold in packages of 100 ties
- High tensile strength



Recommended Mounting Hardware (Mount to T-Slot):

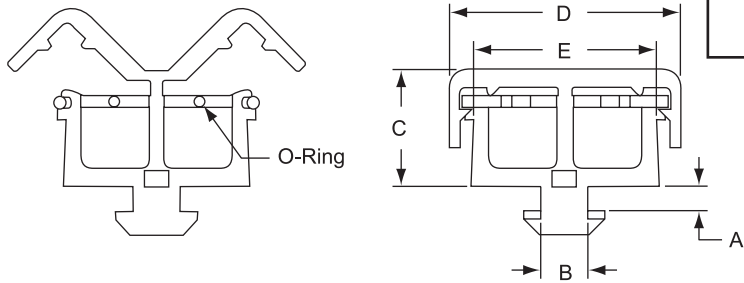
Part No.	Qty	Description
3059	1	1/4-20 x 3/8" BHSCS
AND		
3382	1	1/4-20 Economy T-Nut

Part No.	Length	Description	Quantity
2890	6.000	18 Lb. UV Black Wire Ties	100 Per Package
2891	8.000	40 Lb. UV Black Wire Ties	
2892	11.000	50 Lb. UV Black Wire Ties	
2893	—	.750 Mounting Pads	
2894	—	1.000 Mounting Pads	
2895	—	1/4 Inch Screw Mounting Pads	

80/20® Inc.
The Industrial Erector Set®
THE STANDARD

Cable & Tube Clip, 1/4 Turn
Fiberglass Reinforced Nylon, Black

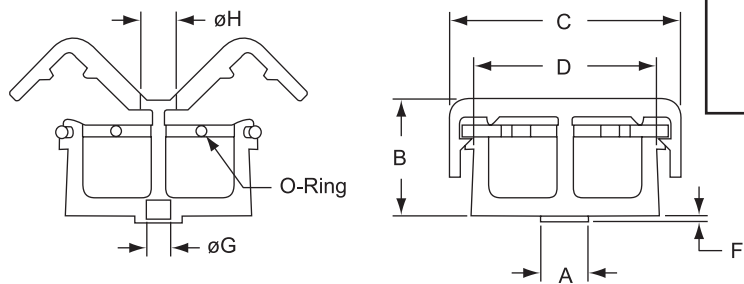
- 15 Series compatible
- Attach cable or tube without the need for cable ties
- Can be opened and closed repeatedly
- Twist 1/4 turn to lock in T-slot



Part No.	A	B (Slot Tab)	C	D	E	F	Lbs.	Compatibility Code*
12319	.177	.315	.787	1.575	1.283	.630	.02	8-15, 8-40

Cable & Tube Clip
Fiberglass Reinforced Nylon, Black

- 15 Series compatible
- Attach cable or tube without the need for cable ties
- Can be opened and closed repeatedly



Recommended Mounting Hardware (Mount to T-Slot):

Part No.	Qty	Description
75-3560	1	M4 x 12mm SHCS & Drop-In T-nut

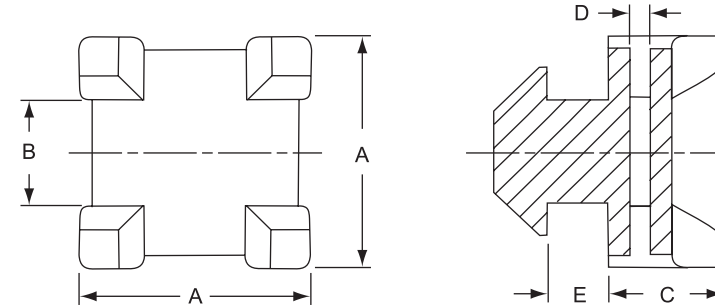
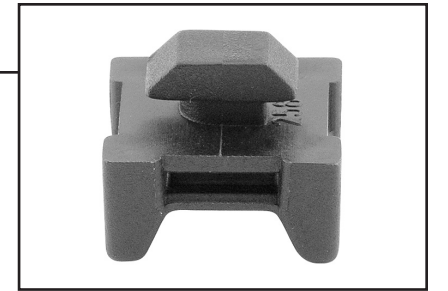
Part No.	A (Slot Tab)	B	C	D	E	F	G	H	(Lbs.)	Compatibility Code*
12025	None	.787	1.575	1.283	.630	.063	.177	.315	.02	8-15, 8-30, 8-40, 10-45
12026	.315	.787	1.575	1.283	.630	.063	.177	.315	.02	8-15, 8-30, 8-40

* See Compatibility Code information on page 152.

Fractional

Cable Mount Block, 1/4 Turn
Fiberglass Reinforced Nylon, Black

- 15, 30, 40 and 45 Series compatible
- Attach cable ties to block in two directions
- Twist 1/4 turn to lock in T-slot

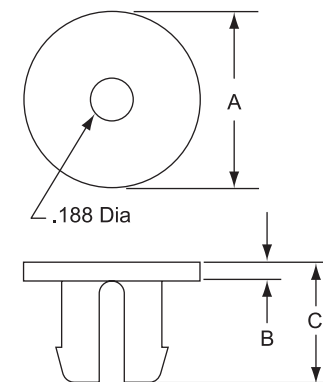
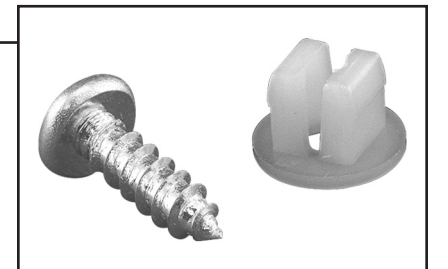


Part No.	A	B	C	D	E	Slot Tab	Lbs.	Compatibility Code*
12316	.866	.394	.433	.079	.169	.315	.01	8-15, 8-40

* See Compatibility Code information on page 152.

Nylon T-Slot Nut

- 15 Series compatible
- Light-duty fastening method for 15 Series accessories
- Remains in place even in vertical applications
- Tightening the #12 sheet metal screw expands the nut into the T-slot

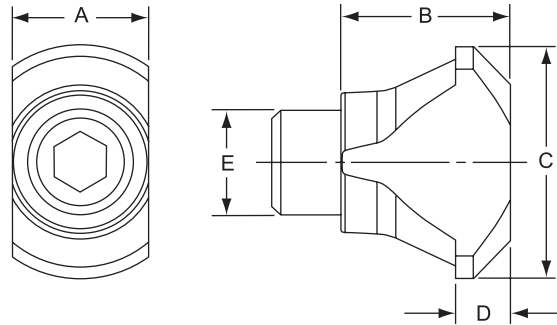


Part No.	Description	Quantity	A	B	C	Lbs.
3348	T-Slot Nuts w/screws	12 per bag	.565	.060	.325	.309 bag
3346	T-Slot Nuts only	50 per bag	.565	.060	.325	.071 bag

80/20® Inc.
The Industrial Erector Set®
THE STANDARD

Anodize Breaker
Zinc-Plated Steel

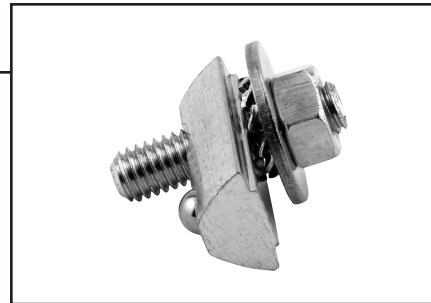
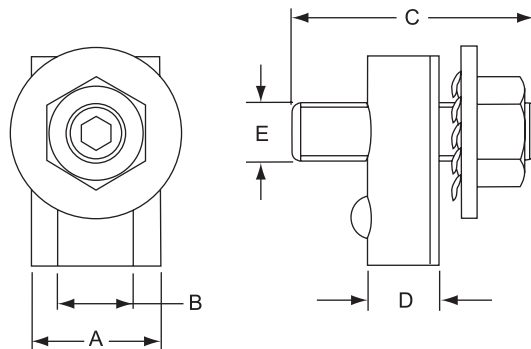
- Penetrates anodizing to provide grounding continuity between 40 Series profiles
- Twist breaker into the T-slot, tilt at 45° angle, then drive the M6 set screw into the seam of the mating profiles



Part No.	A	B	C	D	E	Lbs.	Compatibility Code*
12328	.315	.394	.528	.126	M6	.012	8-15, 8-40

Grounding Terminal
Zinc-Plated Steel/Brass

- For use in applications such as electronics assembly, where electrostatic charges must be avoided
- Creates a conductive connection to T-slotted profiles



Part No.	A	B	C	D	E	Lbs.	Compatibility Code*
12324	.531	.307	.984	.283	M6	.042	8-15, 8-40

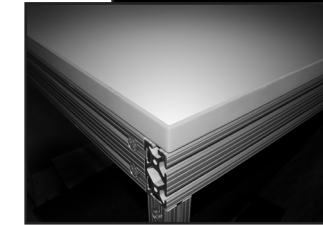
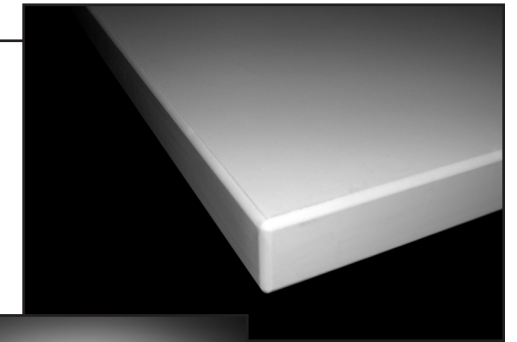
* See Compatibility Code information on page 152.

Fractional

Laminated Table Tops



- Quality 1.25" high-pressure laminate table tops
- Perfect choice for completing your custom workstation
- Available in gray color
- 1/8" PVC bumper edge coordinates with table color



Part No.	Size	Lbs.
2800	1.25" x 30" x 48"	50.000
2802	1.25" x 30" x 60"	63.000
2804	1.25" x 30" x 72"	75.000
2806	1.25" x 36" x 72"	90.000

Table Top Fastening Kit

- Fastening kit includes:
 - 1 - 4295 - 15 Series slotted inside corner bracket
 - 1 - 3330 - 5/16-18 x 5/8 FBHSCS
 - 1 - 3282 - 15 Series 5/16-18 drop-In T-nut
 - 1 - 3760 - 5/16 bright zinc washer
 - 1 - #14 x 1 1/4" Phillips pan head sheet metal screw



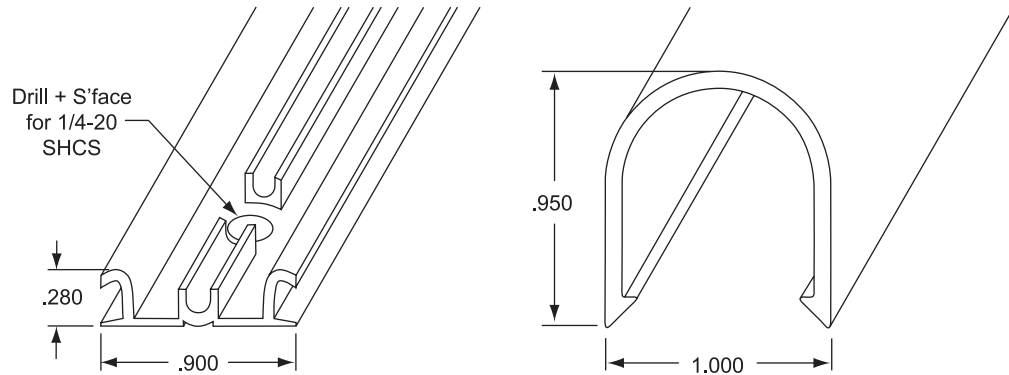
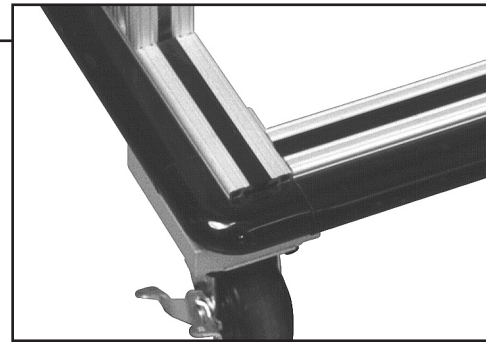
Part No.	Description	Lbs.
2810	Table Top Fastening Kit	.152

80/20® Inc.
The Industrial Erector Set®
THE STANDARD

Cart Guard®



- 10 and 15 Series compatible
- Stock length 144"
- 1" x 1" flexible PVC bumper protects your stuff
- Bolt-on mounting base allows Cart Guard® to snap to your frame
- Stock colors available include black, red, blue and gray
- Refer to page 563 for cut to length services



Part No.	Description
2854	Mounting Base
2855	Black Cover
2856	Gray Cover
2857	Red Cover
2858	Blue Cover

Bolt Kits	Series
3486*	10 and 15 Series

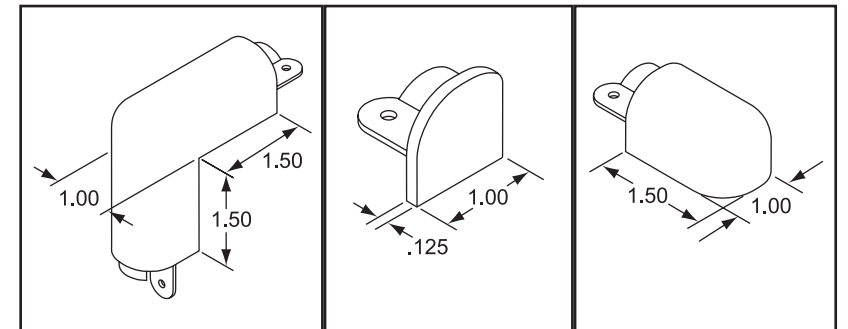
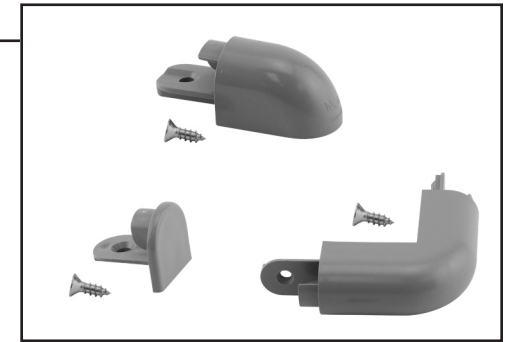
*NOTE: Mounting Base Part No. 2854 requires one (1) 3486 for every four (4) inches of Cart Guard®

Fractional

Cart Guard® Corners



- Cap off your Cart Guard bumpers
- Square end, round end, 90° corner options
- Available in matching Cart Guard colors
- Mounting hardware included — Part No. 3626 (1 per mounting hole)

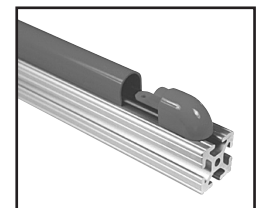


Color	Corner	Square	Round
Black	2867	2863	2859
Gray	2868	2864	2860
Red	2869	2865	2861
Blue	2870	2866	2862

Helpful Hints:

If you are applying Cart Guard to an application, choose the profiles that will be connected to the Cart Guard. Use the information below to determine the lengths of your Cart Guard and Mounting Base according to the "Corners" you are using. If you are using the...

1. Square End Cart Guard Corner, you will need to:
 - Order a piece of Cart Guard which is 1/4" less than your covered length.
 - Order a piece of Mounting Base which is 1/4" less than your profile length.
2. Round End Cart Guard Corner, you will need to:
 - Order a piece of Cart Guard which is 3" less than your covered length.
 - Order a piece of Mounting Base which is 1" less than your profile length.
3. 90 Degree Cart Guard Corner, you will need to:
 - Order a piece of Cart Guard which is 3" less than your covered length.
 - Order a piece of Mounting Base which is the same length as the profile.



Step-by-Step Installation:

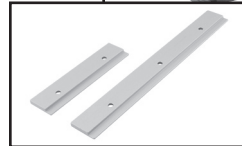
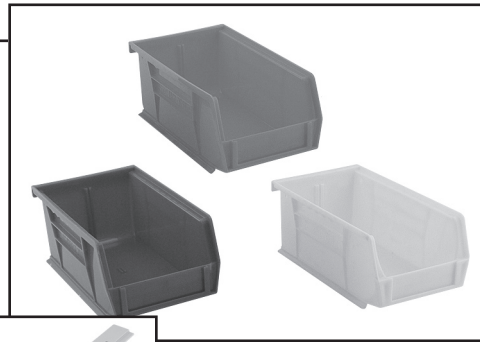
- 1 Bolt Mounting Base to profile with recommended fasteners.
- 2 Place "corners" on the ends with supplied flathead screws.
- 3 Snap on Cart Guard.

80/20® Inc.
The Industrial Erector Set®
THE STANDARD

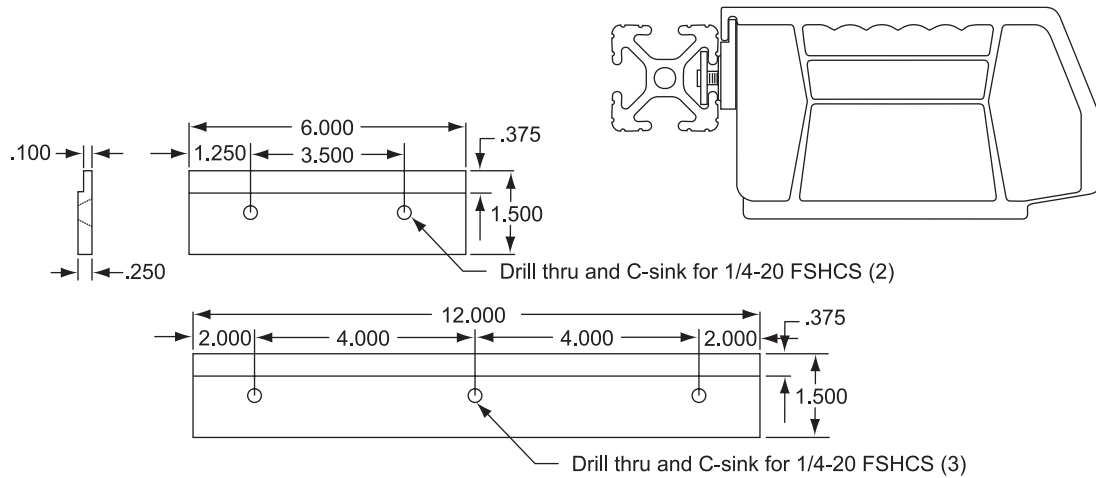
AkroBins®



- 10 and 15 Series compatible
- Bins hang from aluminum container hanger that mounts to T-slot (hardware included)
- Polypropylene storage bins that hang or stack
- Develop your own customized storage system
- AkroBins are made in the USA
- Choose from six sizes
- Large label slot
- In stock for immediate shipment
- Available in red, blue or yellow (specify color when ordering)



Aluminum Container Hangers



Part No.	Outside Dimensions			Inside Dimensions			Lbs.
	L	W	H	L	W	H	
2230	5.375	4.125	3.000	4.750	3.437	2.812	.120
2240	7.375	4.125	3.000	6.750	3.437	2.812	.250
2250	10.875	5.500	5.000	10.250	4.375	4.750	.630
2270	10.875	11.000	5.000	10.250	10.000	4.750	.965
2271	10.750	8.250	7.000	10.000	6.562	6.750	1.155
2272	14.750	8.250	7.000	14.000	6.562	6.750	2.167
2264	6" aluminum container hanger includes mounting hardware						.210
2265	12" aluminum container hanger includes mounting hardware						.415
8507	Container hanger profile anodized max. length 120"						
8508	Container hanger profile mill finish max. length 145"						

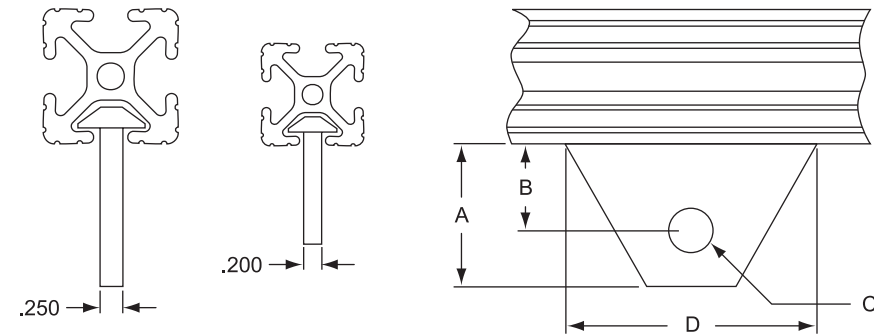
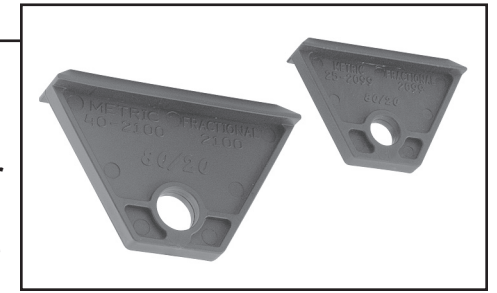
For lengths other than 145" see page 563 in Section 12 for 7212 cut-to-length service.

Fractional

Tool Hangers



- 10 and 15 Series compatible
- Made of high-strength black nylon
- Ideal for hanging air tools, cable reels, heavy door panels or transporting cables; 100 lb. capacity
- Slides into the profile end and moves easily in the T-slot



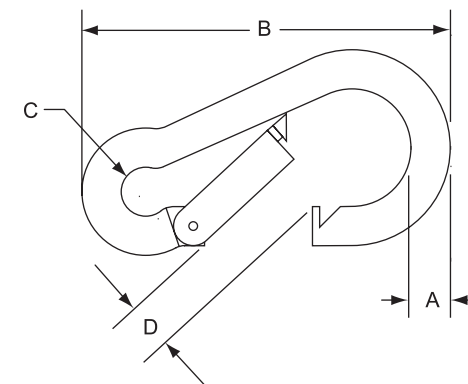
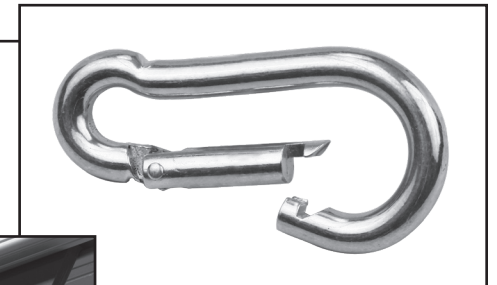
Part No.	Description	A	B	C	D	Lbs.
2099	Tool Hanger 10 Series	1.100	.686	.328	2.00	.012
2100	Tool Hanger 15 Series	1.600	1.05	.500	3.00	.028

☒ = 10 Series Compatible Part

Spring Snap Hook



- Works with 10 and 15 Series plastic tool hangers
- Easy to change tools or devices
- Strong — 550 lbs. breaking strength
- Made of electro-galvanized mild steel



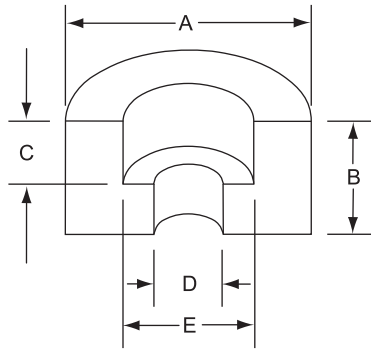
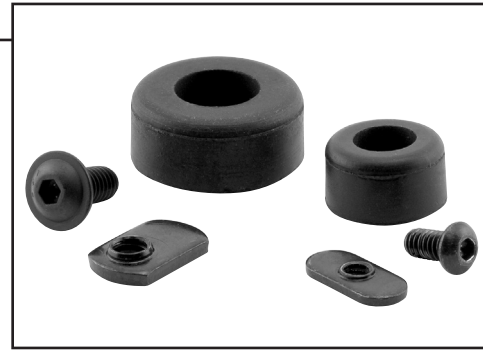
Part No.	Description	A	B	C	D	Lbs.
2108	Spring Snap Hook	.250	2.375	.312	.312	.060

80/20® Inc.
The Industrial Erector Set®
THE STANDARD



Rubber Bumper

- 10 or 15 Series compatible
- Bolts to T-slot with included hardware
- Made of butadiene styrene rubber
- Can be used as door stops, shock mounts, vibration dampeners

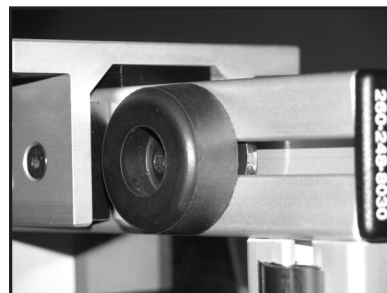


Mounting Hardware (Included):

Bumper Part No.	Qty	Hardware Description
2850	1	1/4-20 x 1/2" BHSCS & Economy T-Nut
2849	1	5/16-18 x 9/16" FBHSCS & Economy T-Nut

Part No.	Description	A	B	C	D	E	Lbs.
2850	Styrene Butadiene Bumper	1.000	.562	.312	.281	.531	.053
2849		1.500	.625	.343	.312	.750	.089

☒ = 10 Series Compatible Part

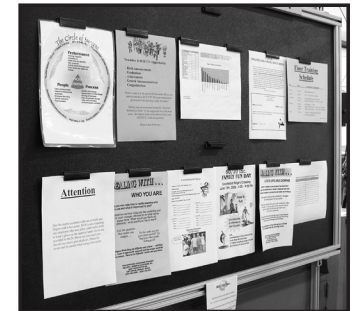
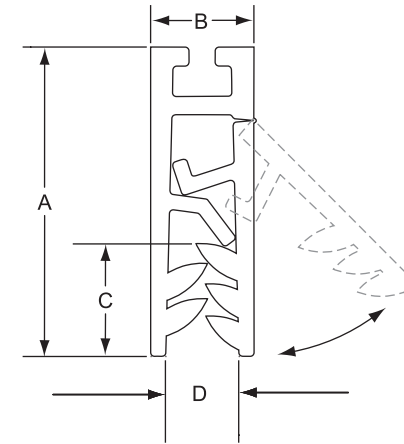


Fractional

Plastic Document Holder



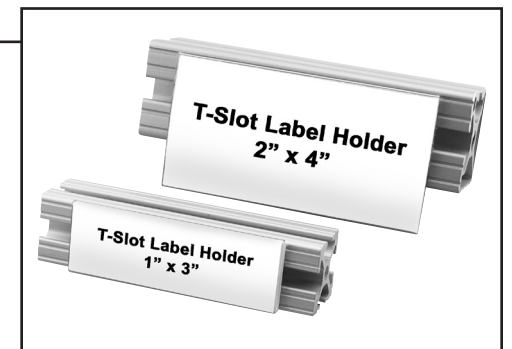
- Snaps shut to hold documents securely
- Holds paper, vinyl, and fabric up to .040" thick
- Available in black PVC
- Adhesive peel & stick strip backing
- Adheres to most materials



Part No.	Standard Length	Description	A	B	C	D	Lbs.
2851	3.000"	Adhesive Mount Document Holder	.812	.282	.343	.173	.019
2852	22.000"		.812	.282	.343	.173	.136

Label Holders

- Snaps into T-slot of 10 and 15 Series profiles
- Heavy-duty clear plastic with non-glare finish
- Sold in packs of 25



Part No.	Size - Inch	Description	Lbs.	Units	Compatibility Code*
2843	1" x 3"	T-Slot Label Holder	.026	Per Pkg. of 25	6-10, 6-25
2844	1" x 6"		.052		
2845	2" x 4"		.068		8-15, 8-30, 8-40
2846	2" x 6"		.101		

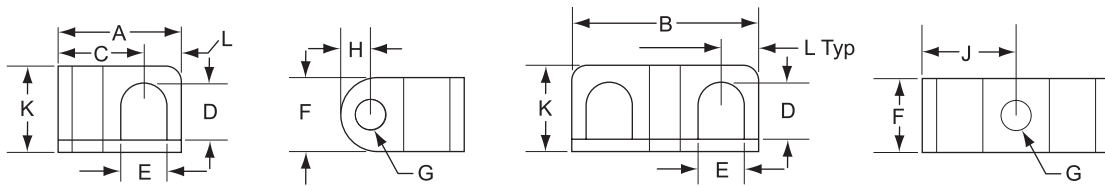
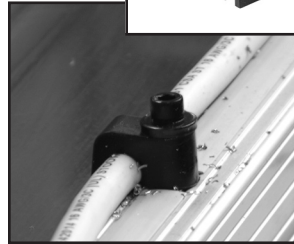
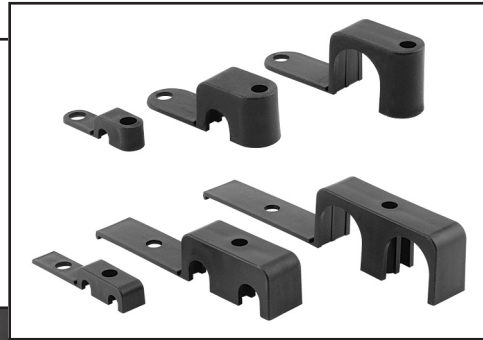
* See Compatibility Code information on page 152.

80/20® Inc.
The Industrial Erector Set®
THE STANDARD

Tube and Wire Clamps



- 10 and 15 Series compatible
- Mounts 1/8" through 1" O.D. tubing and wires
- Made from tough black polypropylene
- Attaches easily to T-slots
- Organizes tubing and wires
- Resists oils, chemicals, and acids
- Stackable design
- High-strength, low cost



Part No.	Tube Size	A	B	C	D	E	F	G	H	J	K	L	Lbs.
Single Clamp													
2500	1/8"	.875	—	.605	.120	.125	.468	.250	.250	—	.406	.270	.004
2501	1/4"	.875	—	.610	.235	.250	.468	.250	.240	—	.406	.265	.004
2502	3/8"	1.062	—	.725	.360	.375	.625	.250	.270	—	.593	.337	.008
2503	1/2"	1.343	—	.875	.500	.500	.781	.250	.250	—	.970	.468	.016
2504	3/4"	1.656	—	1.035	.745	.750	.781	.250	.250	—	1.187	.621	.023
2505	1"	1.656	—	1.010	.950	1.000	.781	.250	.250	—	1.187	.646	.020
Double Clamp													
2506	1/8"	—	1.218	—	.120	.125	.468	.250	.250	.600	.406	.258	.005
2507	1/4"	—	1.218	—	.235	.250	.468	.250	.240	.600	.406	.258	.006
2508	3/8"	—	1.656	—	.360	.375	.625	.250	.270	.800	.593	.344	.011
2509	1/2"	—	2.093	—	.590	.500	.781	.250	.250	1.050	.890	.453	.025
2510	3/4"	—	2.750	—	.745	.750	.781	.250	.250	1.360	1.187	.625	.036
2511	1"	—	2.750	—	.950	1.000	.781	.250	.250	1.375	1.187	.625	.027

Fastener Size:

Description	10 Series	15 Series
1/8" Tube and Wire Clamps	1/4-20 x 3/4"	1/4-20 x 3/4"
1/4" Tube and Wire Clamps	1/4-20 x 3/4"	1/4-20 x 7/8"
3/8" Tube and Wire Clamps	1/4-20 x 7/8"	1/4-20 x 1"
1/2" Tube and Wire Clamps	1/4-20 x 1 1/4"	1/4-20 x 1 1/4"
3/4" Tube and Wire Clamps	1/4-20 x 1 1/2"	1/4-20 x 1 1/2"
1" Tube and Wire Clamps	1/4-20 x 1 1/2"	1/4-20 x 1 1/2"

Recommended Mounting Hardware*						
Part No.	2500	2501	2502	2503	2504	2505
10 Series	3304	3304	3305	3307	3308	3308
15 Series	3304	3305	3306	3307	3308	3308

* Bolt assemblies are for unstacked tube clamps.
All assemblies consist of 1/4-20 SHCS and economy T-Nut.

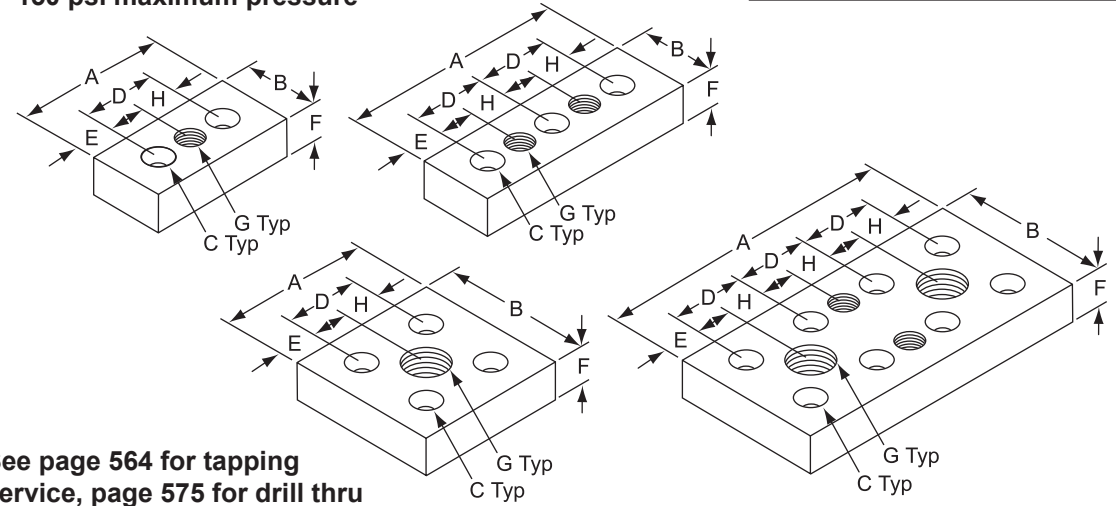
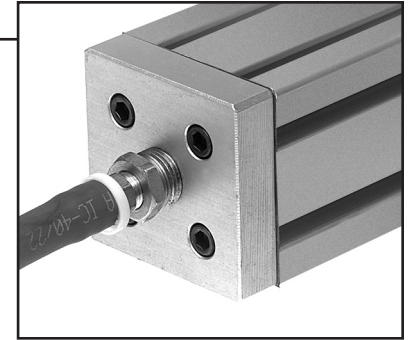
☒ = 10 Series Compatible Part

Fractional

Pressure Manifold Plates



- 10 and 15 Series compatible
- Includes all mounting hardware and gaskets
- Made of 6105-T5 clear anodized aluminum
- Make your own custom manifolds - See pages 203-220 for Structural Shapes
- Pressurize your frame with most fluids and gases
- 150 psi maximum pressure



See page 564 for tapping service, page 575 for drill thru

Part No.	A	B	C	D	E	F	G	H
10 Series								
2151	2.000	1.000	Drill thru and C-bore for 1/4-20 SHCS	1.000	.500	.500	1/4" NPT	.500
2159	2.000	2.000		1.000	.500	.500	3/8" NPT	.500
2341	2.000	1.000		1.000	.500	.500	—	—
2349	2.000	2.000		1.000	.500	.500	—	—
2439	2.000	1.000		1.000	.500	.500	1/8" NPT	.500
2446	3.000	1.000		1.000	.500	.500	—	—
2447	3.000	1.000		1.000	.500	.500	1/4" NPT	.500
2448	4.000	2.000		1.000	.500	.500	—	—
2449	4.000	2.000		1.000	.500	.500	1/4" & 3/8" NPT	.500
2451	2.000	1.000		1.000	.500	.500	—	—
15 Series								
2150	3.000	1.500	Drill thru and C-bore for 5/16-18 SHCS	1.500	.750	.750	3/8" NPT	.750
2160	3.000	3.000		1.500	.750	.750	1/2" NPT	.750
2161	4.500	1.500		1.500	.750	.750	—	—
2162	4.500	1.500		1.500	.750	.750	3/8" NPT	.750
2163	6.000	3.000		1.500	.750	.750	—	—
2164	6.000	3.000		1.500	.750	.750	3/8" & 1/2" NPT	.750
2340	3.000	1.500		1.500	.750	.750	—	—
2350	3.000	3.000		1.500	.750	.750	—	—
2440	3.000	1.500		1.500	.750	.750	1/4" NPT	.750
2441	3.000	1.500		1.500	.750	.750	3/8" NPT	.750
2450	3.000	1.500		1.500	.750	.750	—	—

Pressure Manifold Plates



continued

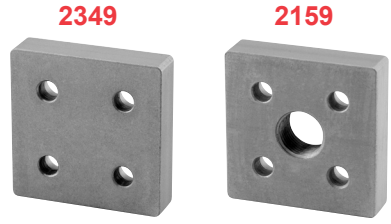
10 Series



2341 2439 2151 2451



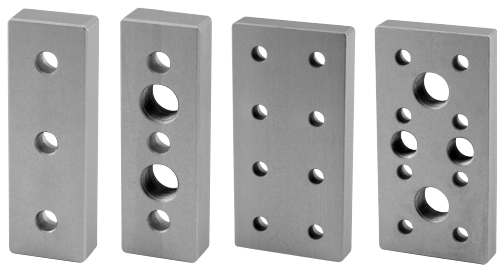
2152



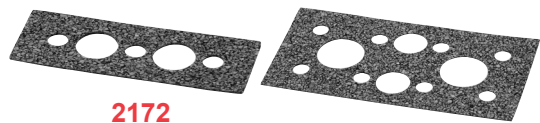
2349 2159



2154



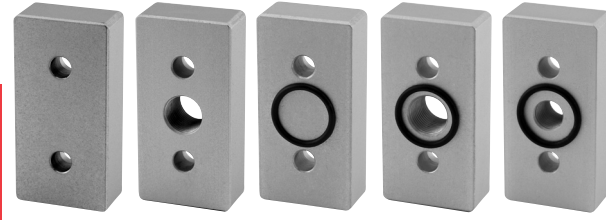
2446 2447 2448 2449



2172

2173

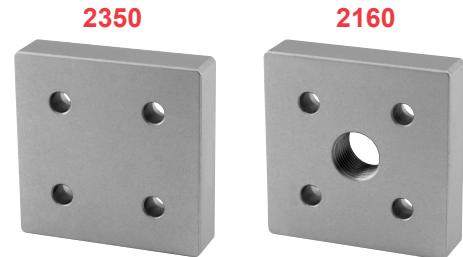
15 Series



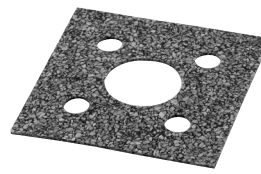
2340 2150 2450 2441 2440



2153



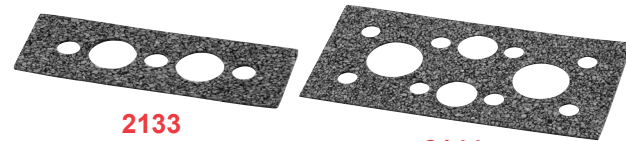
2350 2160



2155



2161 2162 2163 2164



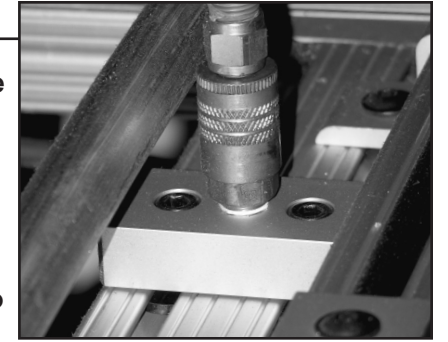
2133

2144

Pressure Manifold Plates



continued



- Plates are supplied with either o-rings bonded in place or gaskets shipped loose
- O-ringed plates are mounted to the profile's T-slotted side to completely seal a hole, or seal a hole where air is to be released
- Gasketed plates are mounted to the profile's end to completely seal the end, or seal the end where air is to be released
- CR-20 is a cork and synthetic rubber material manufactured by Global Technology Systems
- See page 564 for tapping service, page 575 for drill thru

Replacement Gaskets and O-Rings

Size	Gasket		O-Ring	
	Part No.	Material	Part No.	Material
1" x 2"	2152 ☒	CR-20	2157	Buna-N
1" x 3"	2172 ☒	CR-20	—	—
2" x 2"	2154 ☒	CR-20	—	—
2" x 4"	2173 ☒	CR-20	—	—
1.5" x 3"	2153	CR-20	2156	Buna-N
3" x 3"	2155	CR-20	—	—
1.5" x 4.5"	2133	CR-20	—	—
3" x 6"	2144	CR-20	—	—

Profile ends must be tapped a minimum .75" deep for 10 Series or 1" deep for 15 Series. See page 463 for tapping services.

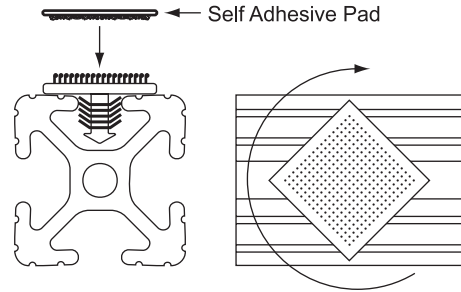
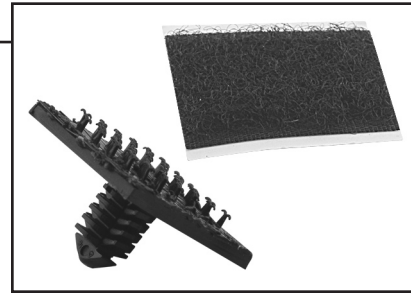
Part No.	Description	Size in Inches	NPT	Mounting Location	Lbs.
2341 ☒	Blank P. M. Plate	1 x 2	—	Profile End	.090
2439 ☒	Tapped P. M. Plate	1 x 2	1/8"	Profile Side	.080
2151 ☒	Tapped P. M. Plate	1 x 2	1/4"	Profile End	.075
2451 ☒	Blank P. M. Plate	1 x 2	—	Profile Side	.090
2446 ☒	Blank P. M. Plate	1 x 3	—	Profile End	.135
2447 ☒	Tapped P. M. Plate	1 x 3	1/4"	Profile End	.112
2349 ☒	Blank P. M. Plate	2 x 2	—	Profile End	.175
2159 ☒	Tapped P. M. Plate	2 x 2	3/8"	Profile End	.160
2448 ☒	Blank P. M. Plate	2 x 4	—	Profile End	.350
2449 ☒	Tapped P. M. Plate	2 x 4	1/4"(2) 3/8"(2)	Profile End	.320
2161	Blank P. M. Plate	1.5 x 4.5	—	Profile End	.540
2162	Tapped P. M. Plate	1.5 x 4.5	3/8"	Profile End	.495
2340	Blank P. M. Plate	1.5 x 3	—	Profile End	.360
2450	Blank P. M. Plate	1.5 x 3	—	Profile Side	.385
2150	Tapped P. M. Plate	1.5 x 3	3/8"	Profile End	.330
2441	Tapped P. M. Plate	1.5 x 3	3/8"	Profile Side	.370
2440	Tapped P. M. Plate	1.5 x 3	1/4"	Profile Side	.370
2350	Blank P. M. Plate	3 x 3	—	Profile End	.725
2160	Tapped P. M. Plate	3 x 3	1/2"	Profile End	.685
2163	Blank P. M. Plate	3 x 6	—	Profile End	1.450
2164	Tapped P. M. Plate	3 x 6	1/2"(2) 3/8"(2)	Profile End	1.370

☒ = 10 Series Compatible Part

80/20® Inc.
The Industrial Erector Set®
THE STANDARD

T-Slot Velcro® Fastener

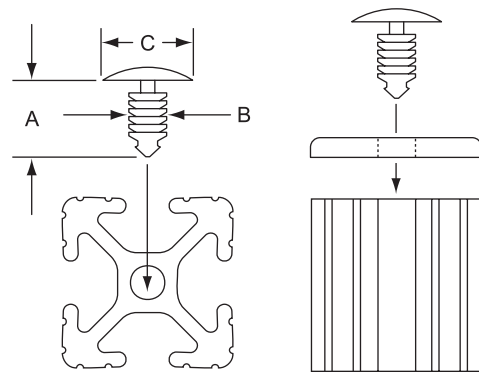
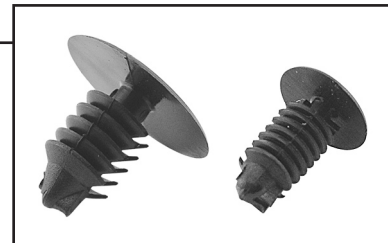
- 15 Series compatible
- Mounts lightweight panels and parts quickly and easily
- The finned projection twists easily into the T-slot
- Includes a self-adhesive mating pad



Part No.	Color	Series	Lbs.
3273	Black	15 Series	.005

Push-In Fastener

- Pushes into the center holes of 10 and 15 Series profiles
- Ideal for fastening end caps or as a document holder
- Available in red, blue, black, yellow or gray (please specify color)



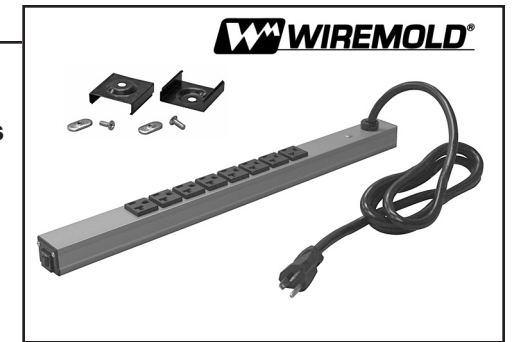
Part No.	Series	A	B	C	Lbs.
3272	10 Series	.500	.230	.400	.0005
3274	15 Series	.625	.300	.695	.0020

☒ = 10 Series compatible part

Fractional

Power Strips

- Mounting clips and hardware are included
- All units are UL and ULC recognized components except as noted
- No machining necessary - mounting clips attach to T-slots

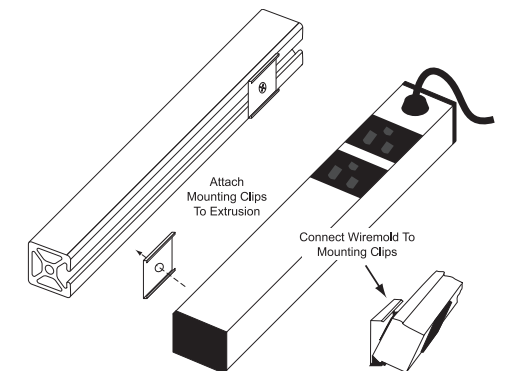


© 2010 The Wiremold Company All Rights Reserved

Part No.	Description	Power Requirements	Cord Length	Surge Protection
2676	20" Long, 8 Outlet, Wiremold® Power Strip	15 amp	6 ft.	No
2670	13" Long, 4 Outlet, Wiremold® Power Strip	20 amp	6 ft.	No
2674	20" Long, 8 Outlet, Wiremold® Power Strip	20 amp	6 ft.	Yes
2675	20" Long, 8 Outlet, Wiremold® Power Strip	20 amp	15 ft.	Yes

Spring Clip Mounting:

- 1) Pre-load the hardware onto the mounting clips.
- 2) Slide the mounting clips into the T-slot.
- 3) Place the mounting clips 1" (25mm) in from each end of the power strip and tighten the mounting clips into place.
- 4) Place power strip in one side of the mounting clips and snap into position.



Power Strip Plug Options



15 Amp Straight Blade



20 Amp Straight Blade

80/20® Inc.*The Industrial Erector Set®***THE STANDARD****Freestanding Guarding by 80/20®**

- Modular - easy to add onto – or make smaller based on the immediate need
- Freestanding for easy movement
- Highly protective of employees and their work environment
- A wide variety of panel choices to choose from so you can still see your work, but protect everything and anything that needs to be protected

